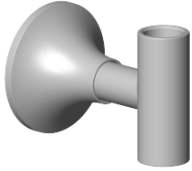



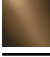







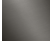


90 17 11 148 00



	Platin gebürstet	90 17 11 148 00-06
	Chrom	90 17 11 148 00-00
	Platin	90 17 11 148 00-08
	Dark Brass matt	90 17 11 148 00-16
	Dark Bronze matt	90 17 11 148 00-17
	Dark Chrome	90 17 11 148 00-19
	Light Gold gebürstet	90 17 11 148 00-27
	Messing gebürstet (23kt Gold)	90 17 11 148 00-28
	Bronze gebürstet	90 17 11 148 00-42
	Champagne gebürstet (22kt Gold)	90 17 11 148 00-46
	Champagne (22kt Gold)	90 17 11 148 00-47
	Dark Platinum gebürstet	90 17 11 148 00-99



## Halter 60 x 60 x 83 mm - Platin gebürstet

---

ERSATZTEILE

90 17 11 148 00



## Halter 60 x 60 x 83 mm - Platin gebürstet

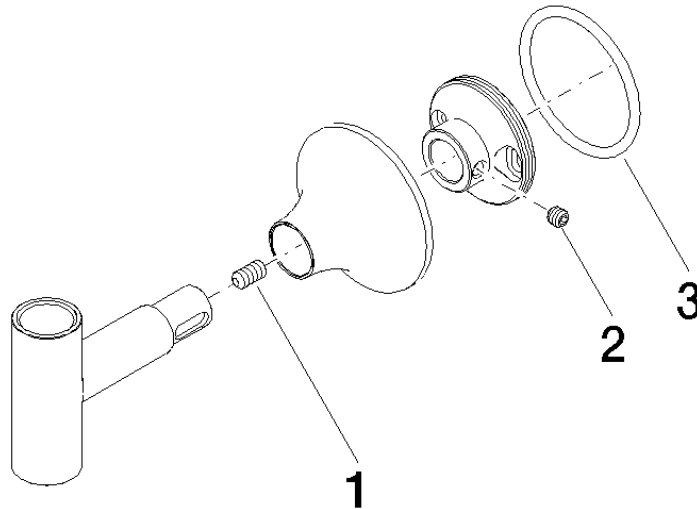
---

ERSATZTEILE

90 17 11 148 00

90 17 11 148 00

Ersatzteile für die  
anderen  
Oberflächenvarianten  
finden Sie hier:  
Chrom



### Ersatzteilstückliste

Nr.	Artikelnummer	Benennung	Verbaumenge	Lieferzeit
3	09 14 10 084 90	O-Ring EPDM 70 48 x 3,5 mm -	1,00	2
2	09 31 11 049 90	Befestigung Gewindestift mit Innensechskant mit Ringschneide M6 x 6 mm -	1,00	2
1	09 31 11 211 90	Befestigung Gewindestift mit Innensechskant mit Ringschneide M6 x 12 mm -	1,00	2