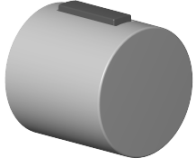








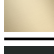










90 17 33 015 00 Produktversion ab 01.04.2025



	Messing gebürstet (23kt Gold)	90 17 33 015 00-28
	Chrom	90 17 33 015 00-00
	Platin gebürstet	90 17 33 015 00-06
	Platin	90 17 33 015 00-08
	Weiß matt	90 17 33 015 00-10
	Dark Brass matt	90 17 33 015 00-16
	Dark Bronze matt	90 17 33 015 00-17
	Dark Chrome	90 17 33 015 00-19
	Light Gold	90 17 33 015 00-26
	Light Gold gebürstet	90 17 33 015 00-27
	Schwarz matt	90 17 33 015 00-33
	Dark Brass gebürstet	90 17 33 015 00-39
	Bronze gebürstet	90 17 33 015 00-42
	Champagne gebürstet (22kt Gold)	90 17 33 015 00-46
	Champagne (22kt Gold)	90 17 33 015 00-47
	Chrom gebürstet	90 17 33 015 00-93
	Dark Platin gebürstet	90 17 33 015 00-99



Griff für Thermostat Ø 48 x 48 mm - Messing gebürstet (23kt Gold)

ERSATZTEILE

90 17 33 015 00 Produktversion ab 01.04.2025



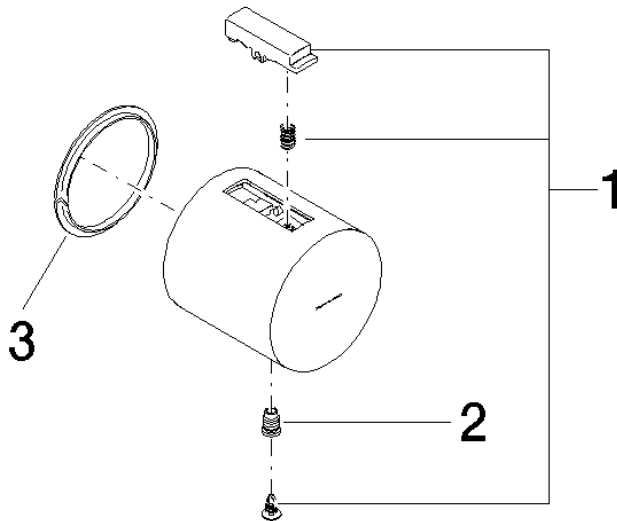
Griff für Thermostat Ø 48 x 48 mm - Messing gebürstet (23kt Gold)

ERSATZTEILE

90 17 33 015 00 Produktversion ab 01.04.2025

90 17 33 015 00 Produktversion ab 01.04.2025

Ersatzteile für die
anderen
Oberflächenvarianten
finden Sie hier:
Chrom



Ersatzteilstückliste

Nr.	Artikelnummer	Benennung	Verbaumenge	Lieferzeit
2	09 31 11 511 90	Befestigung für Thermostatgriff Ø 6 x 8 mm -	1,00	2
1	90 21 33 011 00-13	Reparaturset für Thermostatgriff - schwarz	1,00	2
3	90 28 10 193 00 90	Ring	1,00	2